

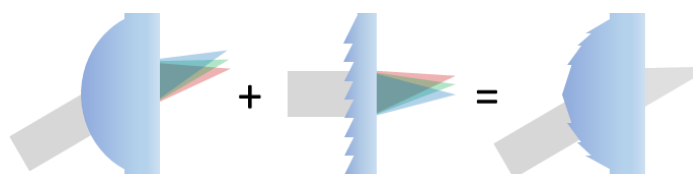
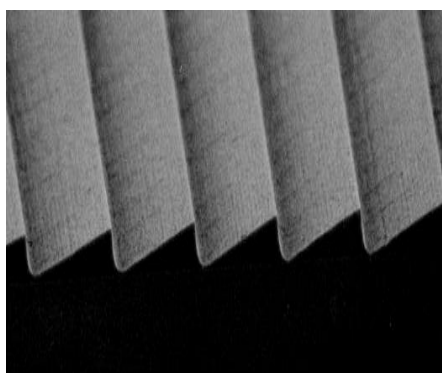
Kinoform

Diffractive Optical Element

Description

A Kinoform is a diffractive optical element with submillimeter scale microstructure period and wavelength scale depth. Using a diffractive structure, which has the opposite color dispersion due to simple refraction of the index of refraction of the material, a single lens with high correction of chromatic aberration and thermal compensation can be realized, along with collimators for laser diode.

At Nalux, high-precision mold processing and mass-production of plastic lenses with Kinoform surfaces is possible. We will provide optimal solution to realize your idea from design to mass production.



Application

- Imaging lens
- Projection lens
- Collimator lens

Performance

Structure Size (pitch)	min. 10 um
Processing diameter	max. 60 mm
Mold processing	Diamond turning Photolithography